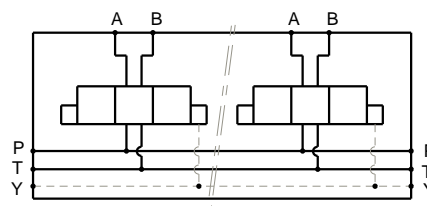


Stations	X	Y	(kg)
1	115	91	19
2	215	191	35
3	315	291	51
4	415	391	67
5	515	491	83



Technical specifications

Material : Cast iron EN-GJL-250 _ Phosphatation
 Pressure : 250 bar maxi
 Options : P and/or T not drilled through
 zinc plating
 pilot line (X) 3/8" BSP

Designation code :

MR - 7 - * - 1" G

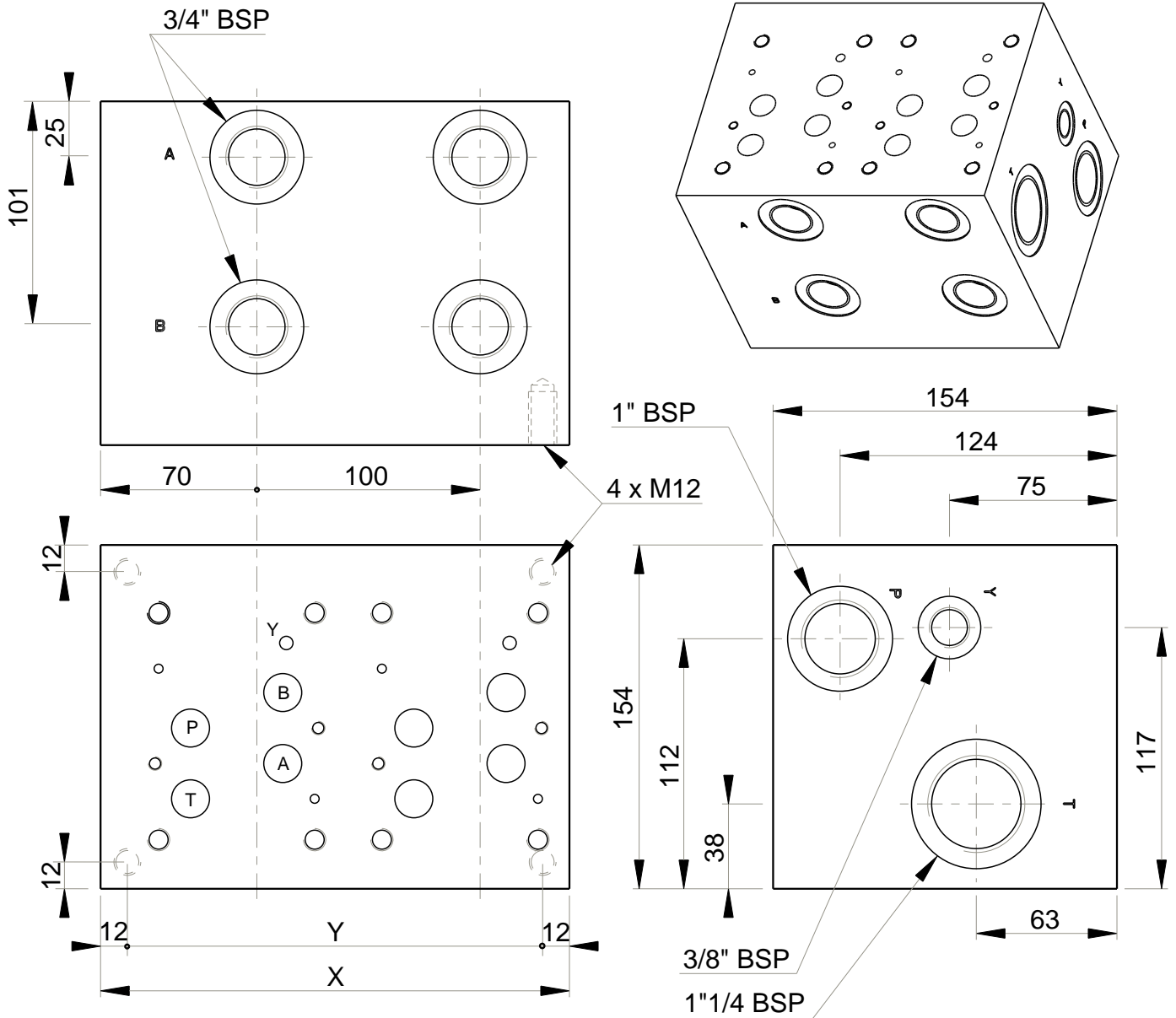
MECABOR

CETOP 7
side entry

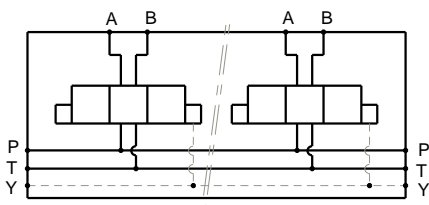
Station number

G : ports BSP

Ports



Stations	X	Y	(kg)
1	110	86	16
2	210	186	30



Technical specifications

Material : Cast iron EN-GJL-250 _ Phosphatation
 Pressure : 250 bar maxi
 Options : P and/or T not drilled
 zinc plating
 pilot line (X) 3/8" BSP

Designation code :

MR - 7 - * - 3/4" G

MECABOR

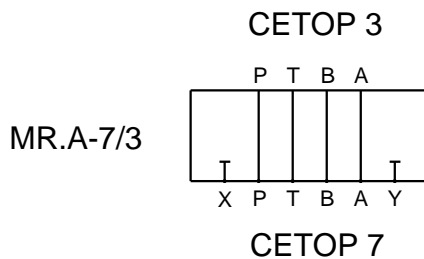
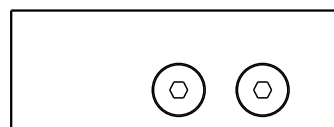
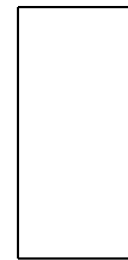
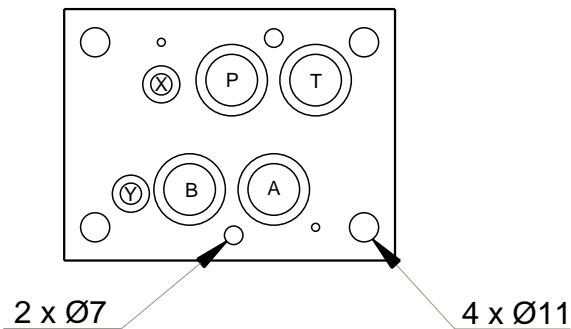
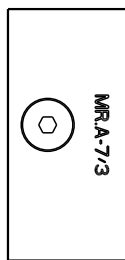
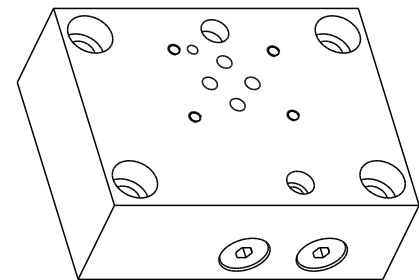
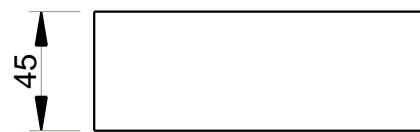
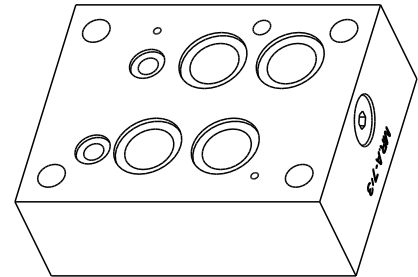
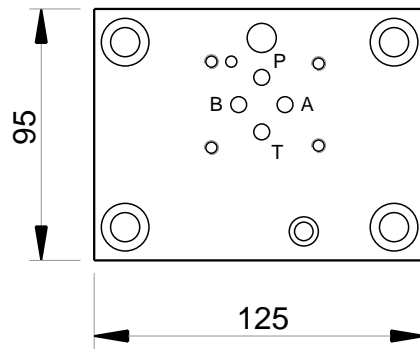
CETOP 7

Side entry

Station number

G : ports BSP

Ports



Technical specifications

Material	: Steel 1.1167 _ Phosphatation
Pressure	: 300 bar maxi
Weight	: 3.80 kg
Supplied with seals and screws	

Designation code :

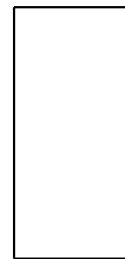
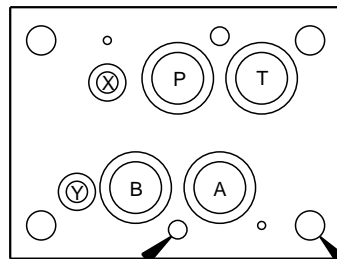
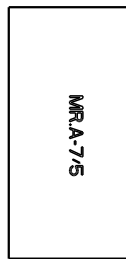
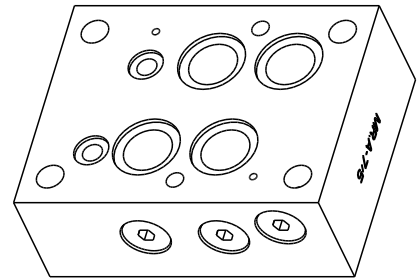
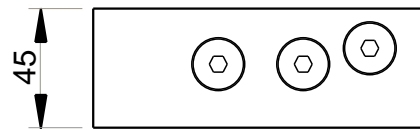
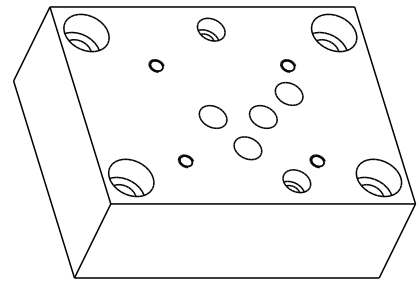
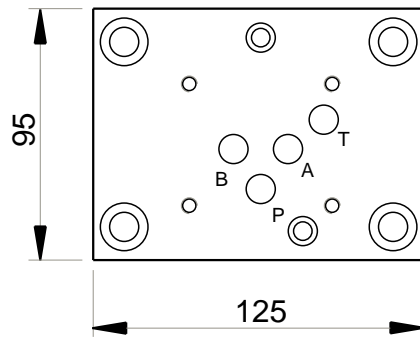
MR . A - 7 / 3

MECABOR

Adaptator plate

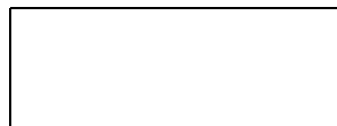
CETOP 7

CETOP 3

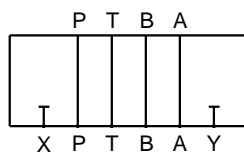


2 x Ø7

4 x Ø11



CETOP 5



MR.A-7/5

CETOP 7

Technical specifications

Material	: Steel 1.1167 _ Phosphatation
Pressure	: 300 bar maxi
Weight	: 3.60 kg
Supplied with seals and screws	

Designation code :

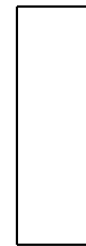
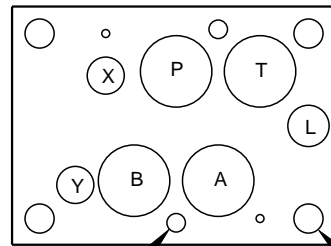
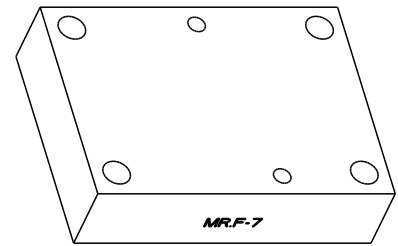
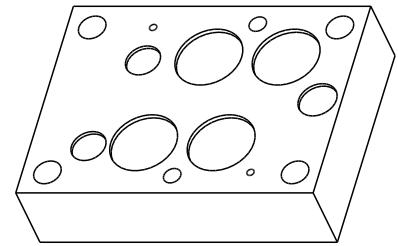
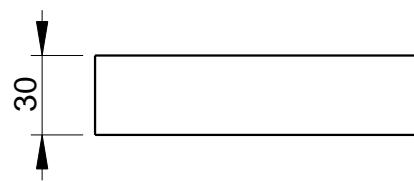
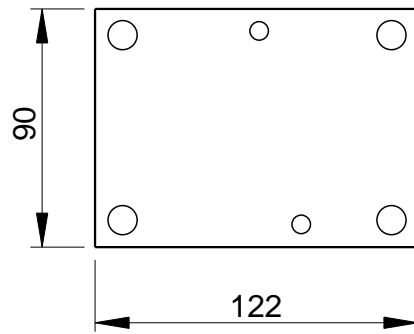
MR . A - 7 / 5

MECABOR

Adaptator plate

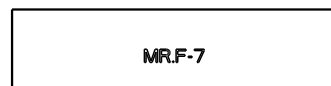
CETOP 7

CETOP 5



2 x Ø7

4 x Ø11



MR.F-7



Technical specifications

Material	: Steel 1.1167 _ Phosphatation
Pressure	: 300 bar maxi
Weight	: 2.60 kg
Supplied with seals and screws	

Designation code :

MR . F - 7

MECABOR

Blanking plate

CETOP 7