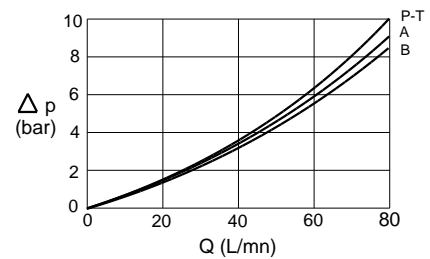
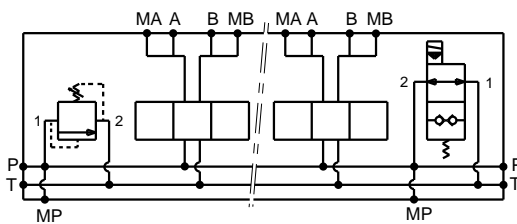


Stations	X	Y	(kg)
1	125	105	6.60
2	175	155	9.20
3	225	205	11.90
4	275	255	14.50
5	325	305	17.10
6	375	355	19.80



Technical specifications	
Material	: Cast iron EN-GJS-400-15 _ Phosphatation
Pressure	: 350 bar maxi
Flow rate	: 80 L/mn maxi

Designation code :

**PREMIUM - 3 . \* . LPR . BP**

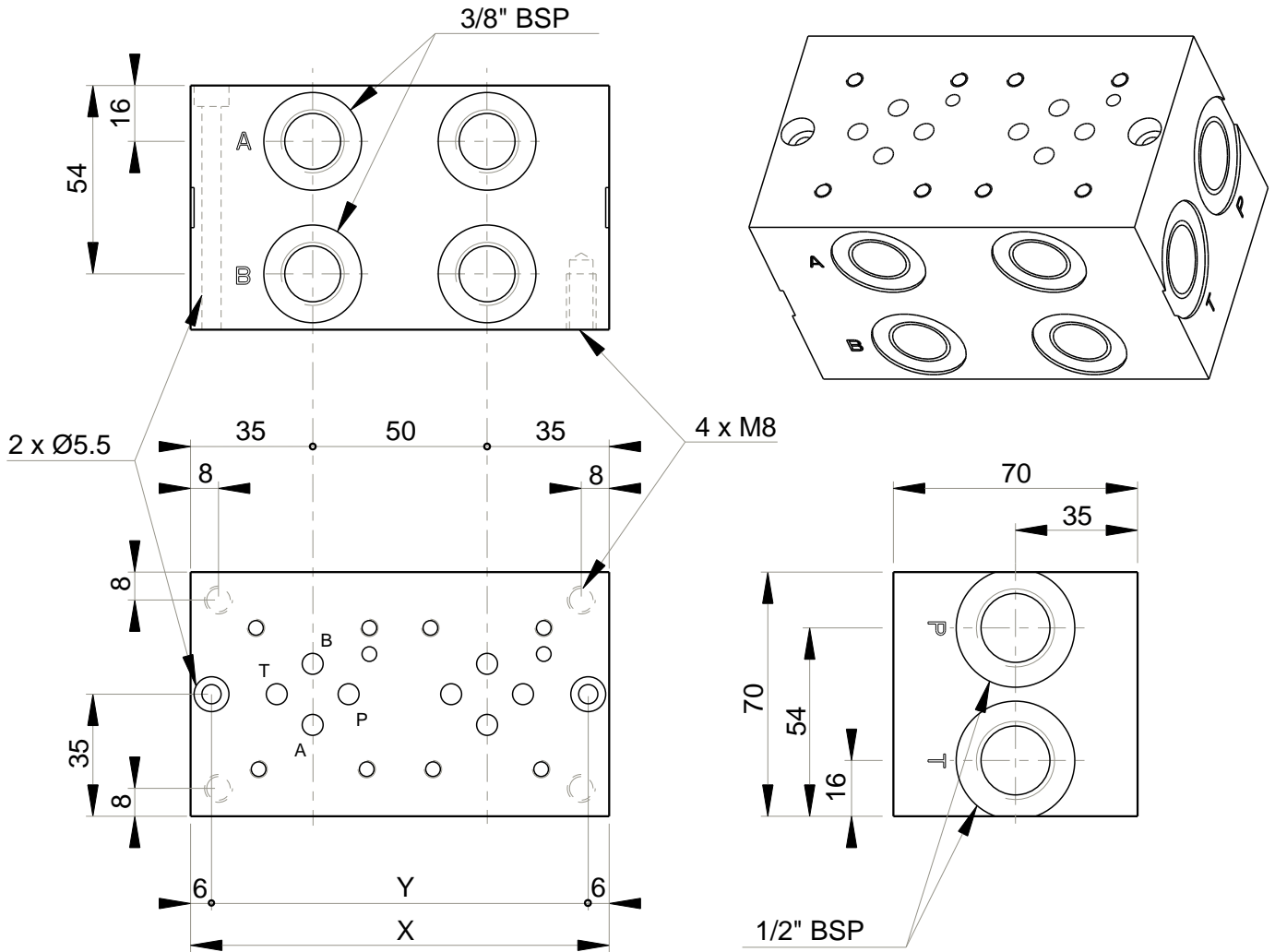
CETOP 3

Station number

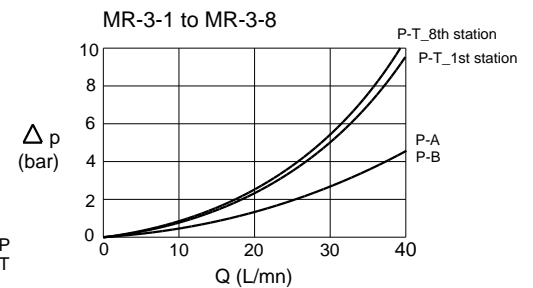
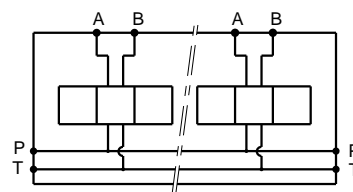
Relief valve (option)

(Adjustable external screw)

By-pass valve (option)



Stations	X	Y	(kg)
1	70	58	2.10
2	120	108	3.60
3	170	158	5.20
4	220	208	6.70
5	270	258	8.30
6	320	308	9.80
7	370	358	11.40
8	420	408	13.00



### Technical specifications

Material : Cast iron EN-GJL-250 \_ Phosphatation  
 Pressure : 300 bar maxi  
 Flow rate : 40 L/mn maxi  
 Options : P and/or T not drilled through  
 zinc plating  
 to 12 stations

Designation code :

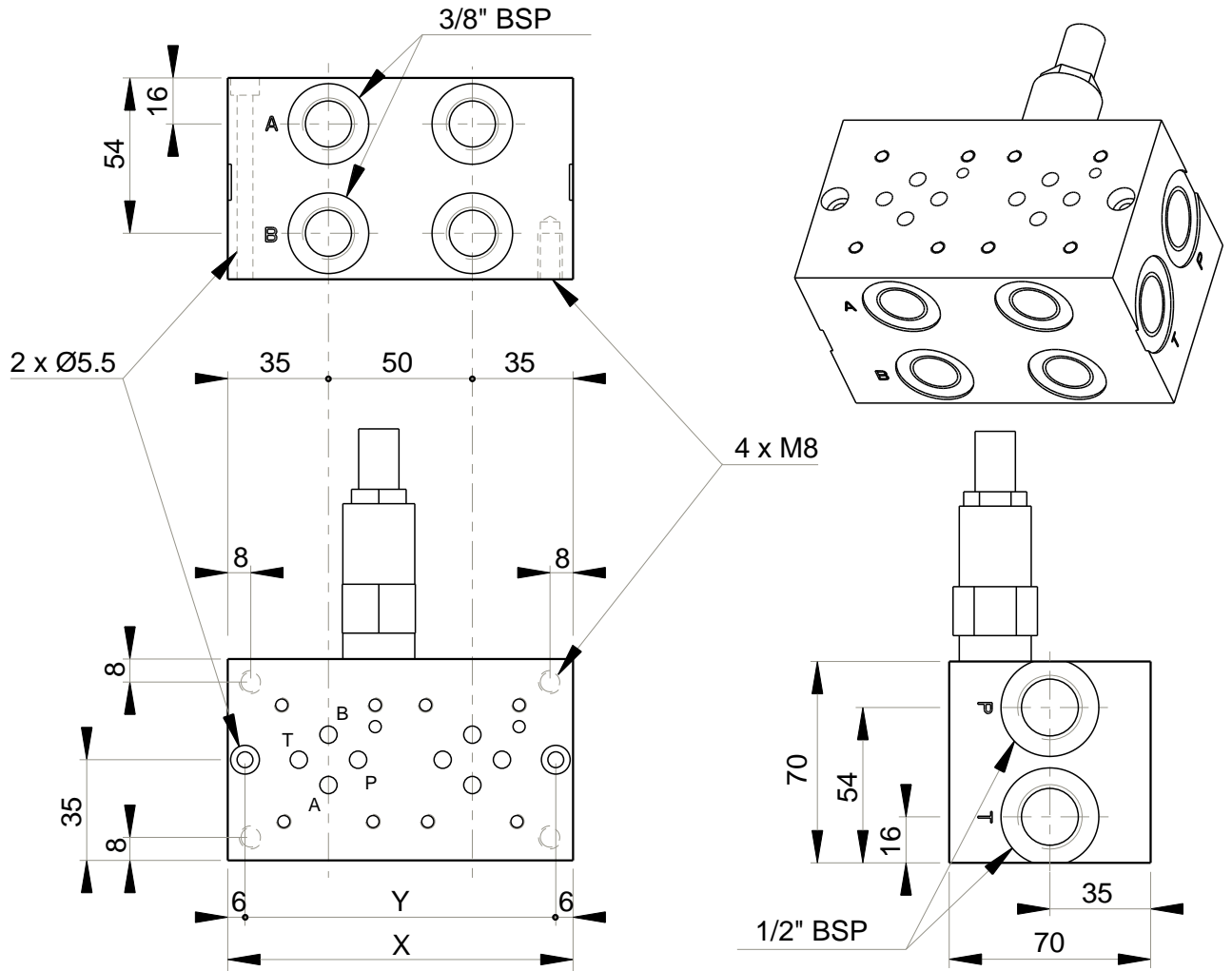
**MR - 3 - \* . G**

MECABOR

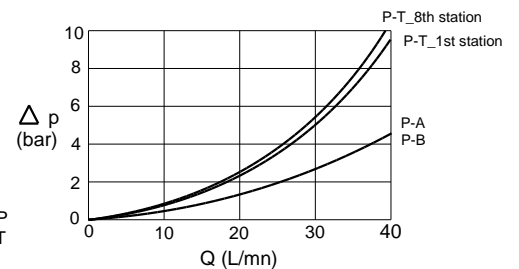
CETOP 3  
Side entry

Station number

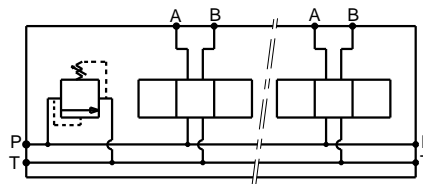
G : ports BSP



MR-3.LPR-1 to MR-3.LPR-8



Stations	X	Y	(kg)
1	90	78	2.90
2	120	108	3.80
3	170	158	5.40
4	220	208	6.90
5	270	258	8.50
6	320	308	10.00
7	370	358	11.60
8	420	408	13.20



### Technical specifications

- Material : Cast iron EN-GJL-250 \_ Phosphatation
- Pressure : 300 bar maxi
- Flow rate : 40 L/mn maxi
- Relief valve : Adjustable from 105 to 210 bar (preset at 210 bar)
- Options : P and/or T not drilled through  
zinc plating  
to 12 stations  
Relief valve adjustable from 175 to 350 bar (preset at 270 bar)

Designation code :

**MR - 3 . LPR - \* . G**

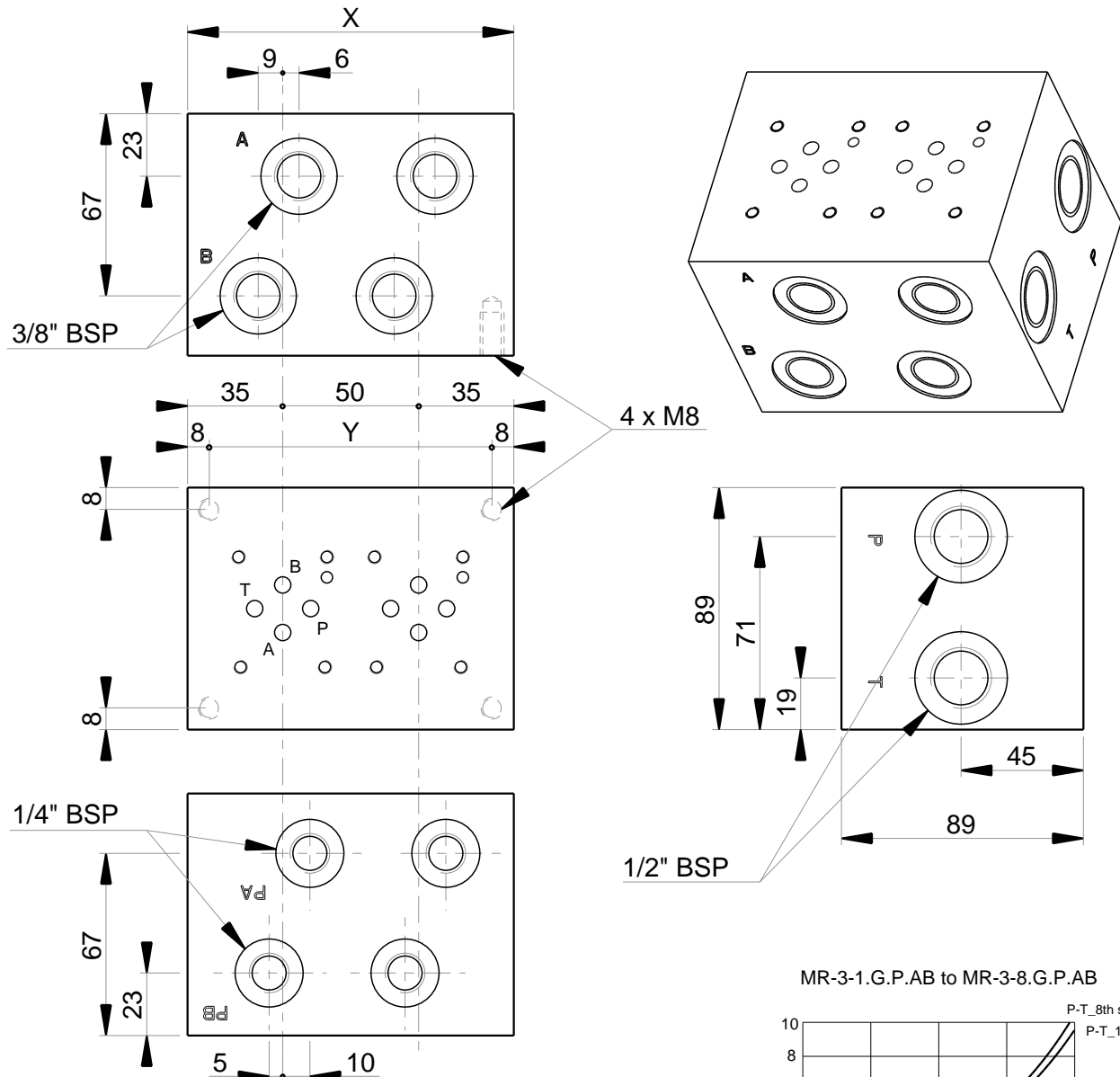
MECABOR

CETOP 3  
Side entry

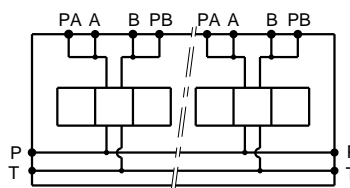
Pressure Relief valve  
LPR = Adjustable external screw

G : ports BSP

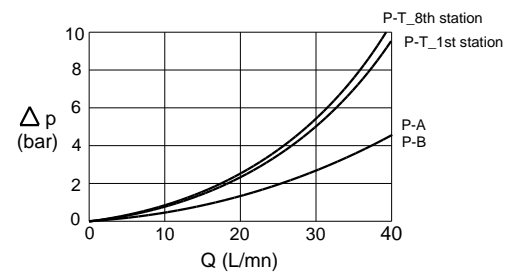
Station number



Stations	X	Y	(kg)
1	70	54	3.50
2	120	104	6.00
3	170	154	8.50
4	220	204	11.00
5	270	254	13.50
6	320	304	16.00
7	370	354	18.50
8	420	404	21.00



MR-3-1.G.P.AB to MR-3-8.G.P.AB



### Technical specifications

Material : Cast iron EN-GJL-250 \_ Phosphatation  
 Pressure : 300 bar maxi  
 Flow rate : 40 L/mn maxi  
 Options : P and/or T not drilled through  
           zinc plating  
           to 12 stations

Designation code :

**MR - 3 - \* . G . P . AB**

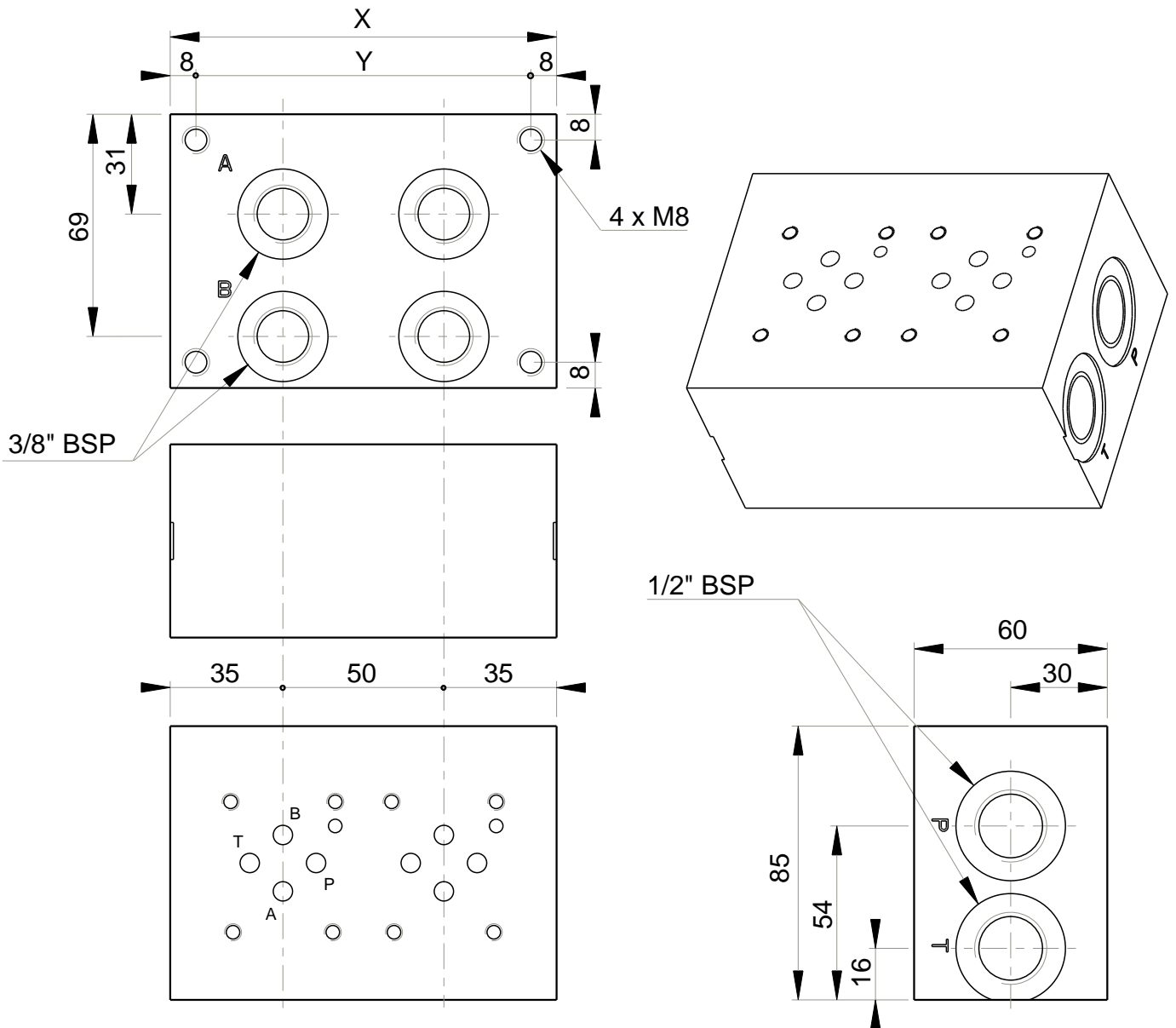
MECABOR

CETOP 3  
Side entry

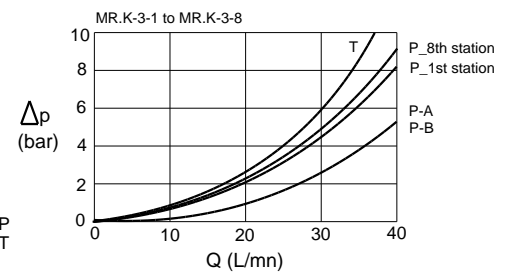
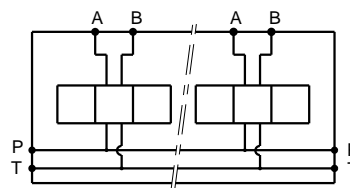
Station number

Pressure test points  
on A and B

G : ports BSP



Stations	X	Y	(kg)
1	70	54	2.35
2	120	104	3.90
3	170	154	5.45
4	220	204	7.00
5	270	254	8.55
6	320	304	10.10
7	370	354	11.65
8	420	404	13.20



Technical specifications	
Material	: Cast iron EN-GJL-250 _ Phosphatation
Pressure	: 300 bar maxi
Flow rate	: 40 L/mn maxi
Options	: P and/or T not drilled through zinc plating to 12 stations

Designation code :

**MR . K - 3 - \* . G**

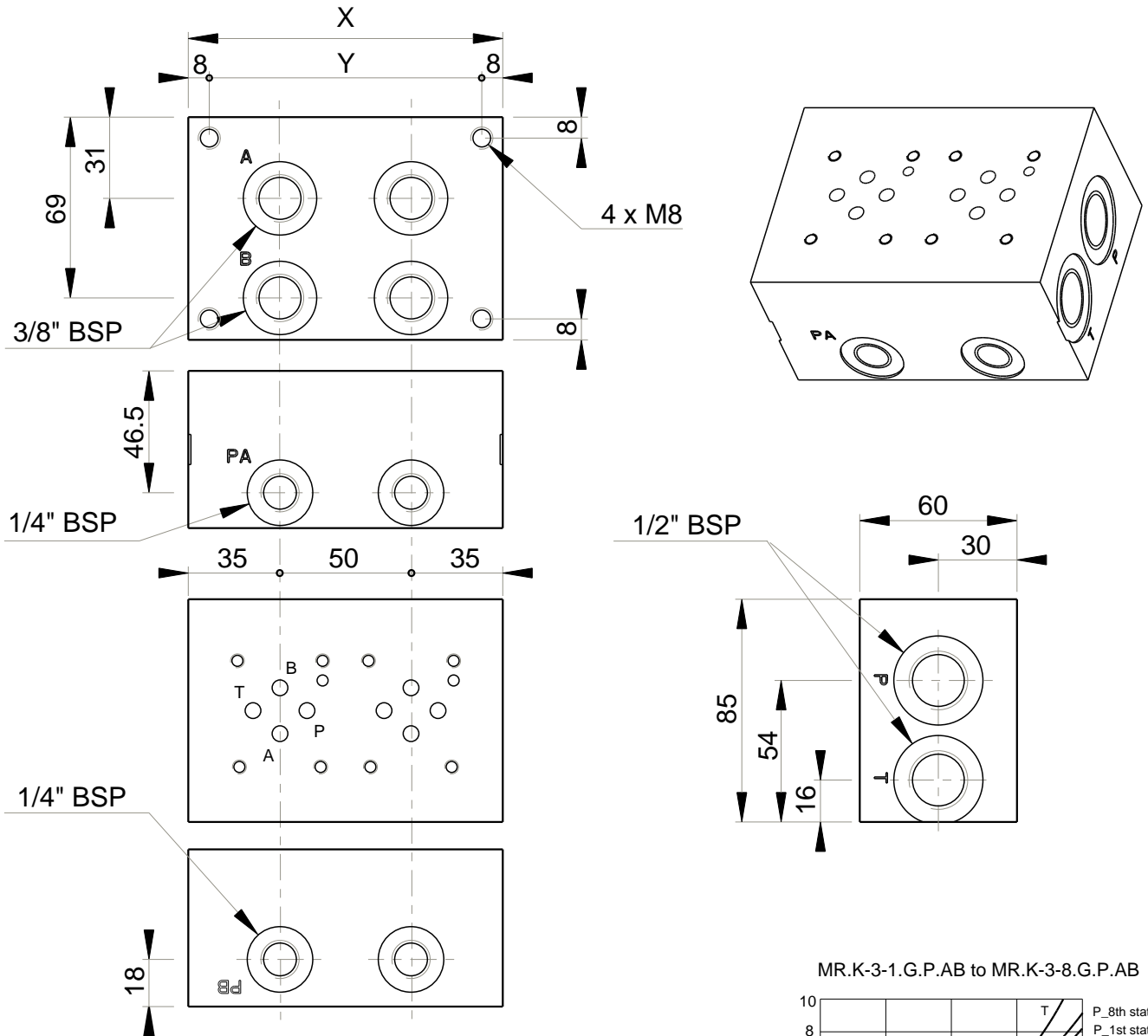
MECABOR

Bottom entry

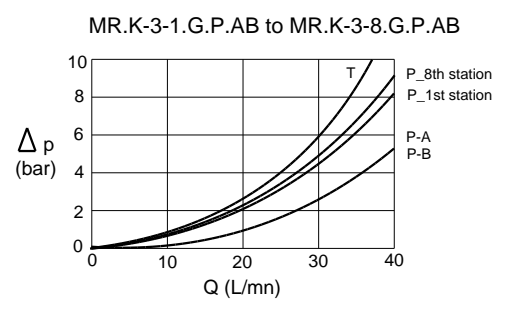
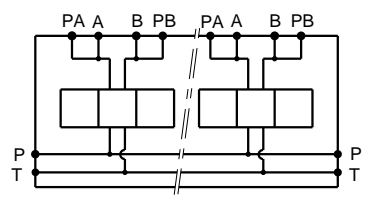
CETOP 3

G : ports BSP

Station number



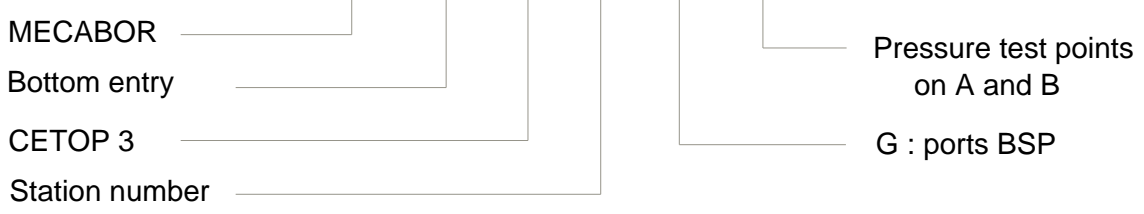
Stations	X	Y	(kg)
1	70	54	2.35
2	120	104	3.90
3	170	154	5.45
4	220	204	7.00
5	270	254	8.55
6	320	304	10.10
7	370	354	11.65
8	420	404	13.20

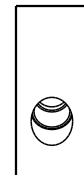
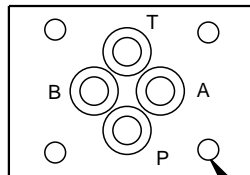
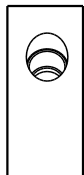
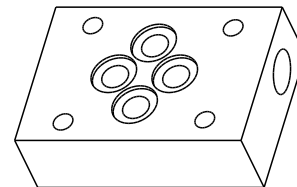
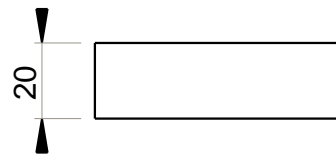
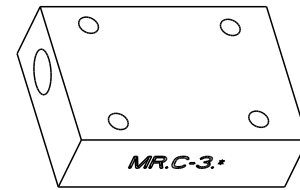
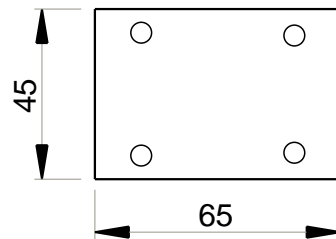


Technical specifications	
Material	: Cast iron EN-GJL-250 _ Phosphatation
Pressure	: 300 bar maxi
Flow rate	: 40 L/mn maxi
Options	: P and/or T not drilled through zinc plating to 12 stations

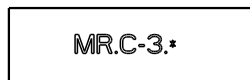
Designation code :

**MR . K - 3 - \* . G . P . AB**





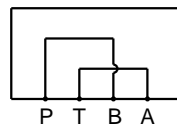
4 x Ø5.5



MR.C-3.PA



MR.C-3.PB



### Technical specifications

Material : Steel 1.0736 \_ Phosphatation  
 Pressure : 300 bar maxi  
 Weight : 0.40 kg  
 Supplied with seals

Designation code :

**MR . C - 3 . \***

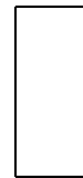
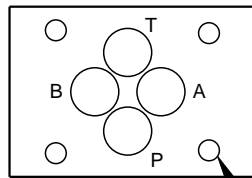
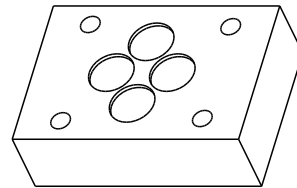
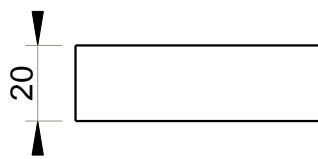
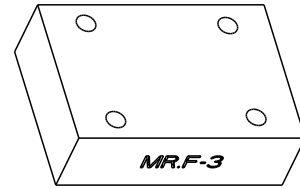
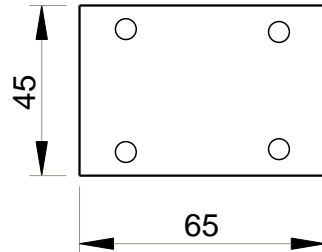
MECABOR

Crossover plate

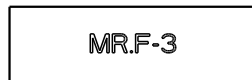
CETOP 3

PA = P - A  
 T - B

PB = P - B  
 T - A



4 x Ø5.5



MR.F-3



### Technical specifications

Material : Steel 1.0736 \_ Phosphatation  
 Pressure : 300 bar maxi  
 Weight : 0.46 kg  
 Supplied with seals and screws

Designation code :

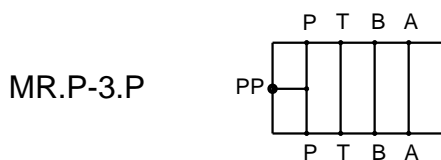
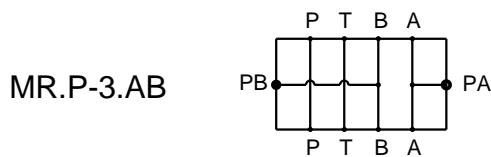
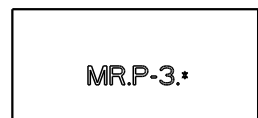
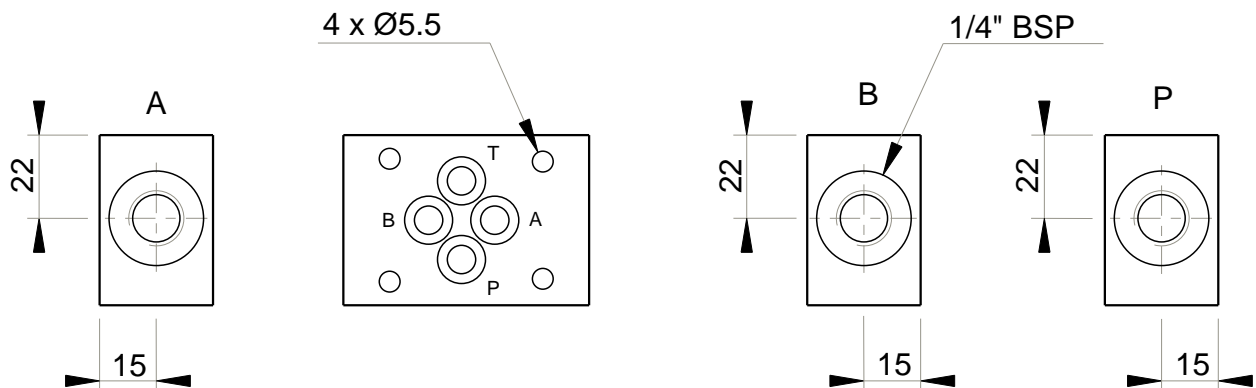
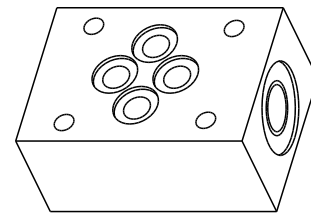
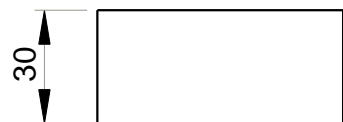
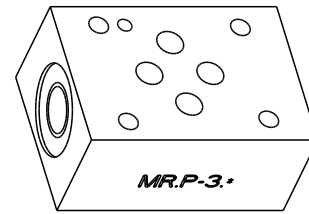
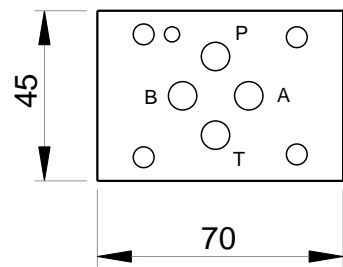
**MR . F - 3**

MECABOR

Blanking plate

CETOP 3





### Technical specifications

Material	: Steel 1.0736 _ Phosphatation
Pressure	: 300 bar maxi
Weight	: 0.64 kg
Supplied with seals	

Designation code : **MR . P - 3 . \* - 1/4" G**

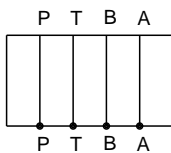
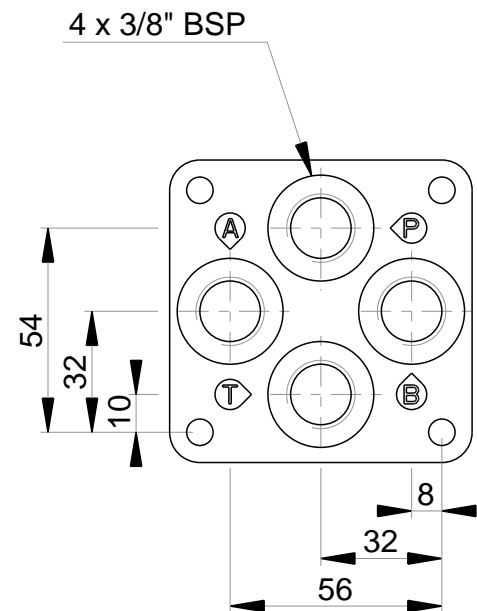
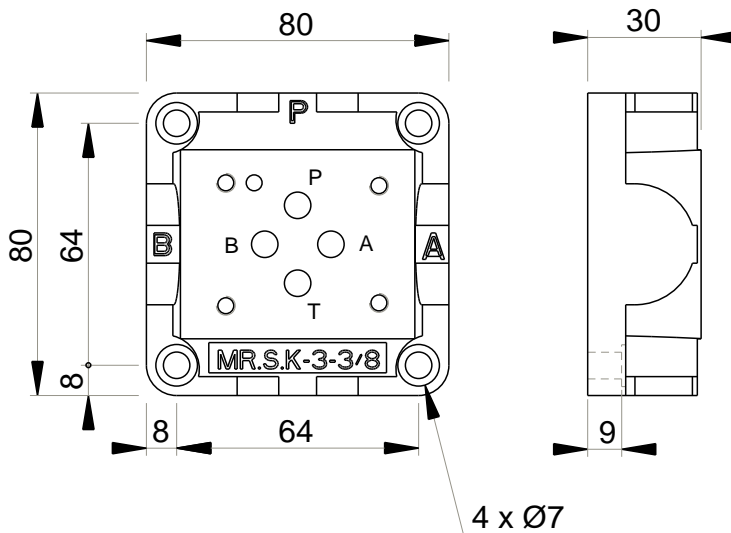
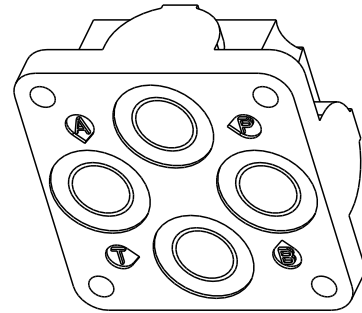
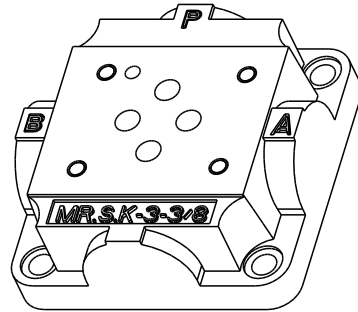
MECABOR

Subplate with  
pressure test points

CETOP 3

G : ports BSP

P = pressure test point on P  
AB = pressure test points  
on A and B



### Technical specifications

Material	: Cast iron EN-GJS-400-15 _ Phosphatation
Pressure	: 300 bar maxi
Flow rate	: 60 L/mn maxi
Weight	: 0.9 kg

Designation code :

**MR . S . K - 3 - 3/8" G**

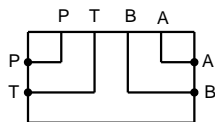
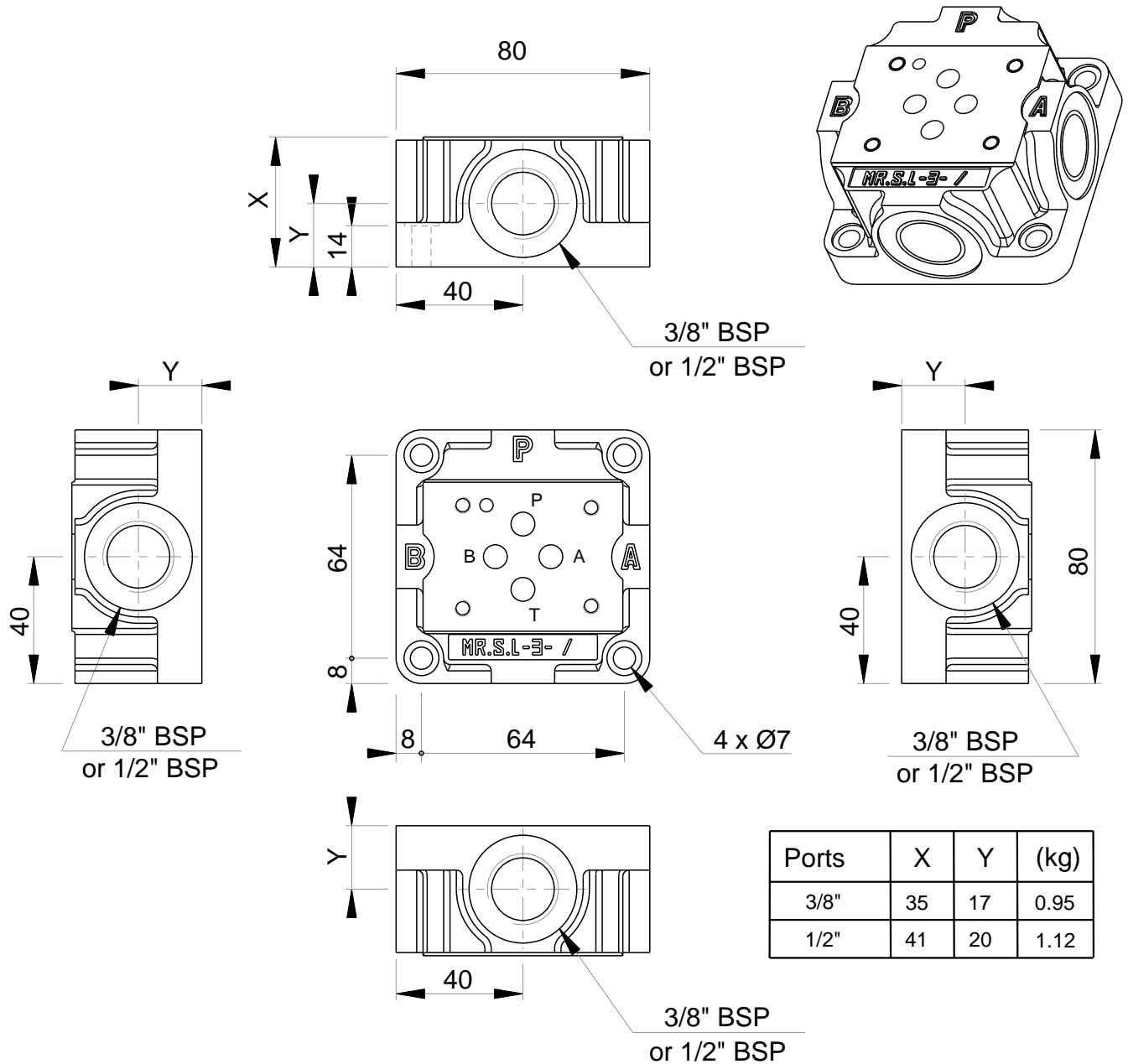
MECABOR

Subplate

Bottom entry

G : ports BSP

CETOP 3



### Technical specifications

Material	: Cast iron EN-GJS-400-15 _ Phosphatation
Pressure	: 300 bar maxi
Flow rate	: 60 L/mn maxi (3/8" BSP) 80 L/mn maxi (1/2" BSP)

Designation code :

**MR . S . L - 3 - \* G**

MECABOR

Subplate

Side entry

CETOP 3

G : ports BSP

3/8"  
1/2"