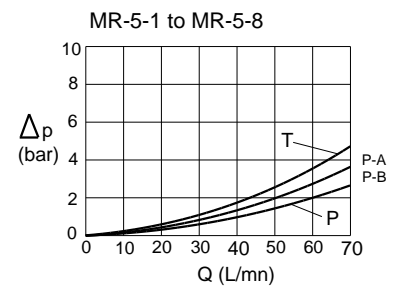
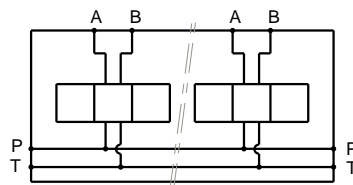


Stations	X	Y	(kg)
1	80	56	5.80
2	160	136	11.30
3	240	216	17.00
4	320	296	22.70
5	400	376	28.50
6	480	456	34.20
7	560	536	39.90
8	640	616	45.60



### Technical specifications

Material : Cast iron EN-GJL-250 \_ Phosphatation  
 Pressure : 300 bar maxi  
 Flow rate : 70 L/mn maxi  
 Options : P and/or T not drilled  
 zinc plating  
 to 12 stations

Designation code :

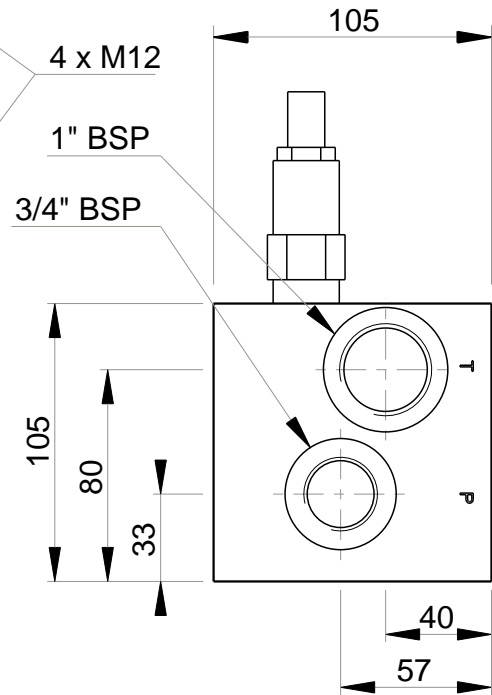
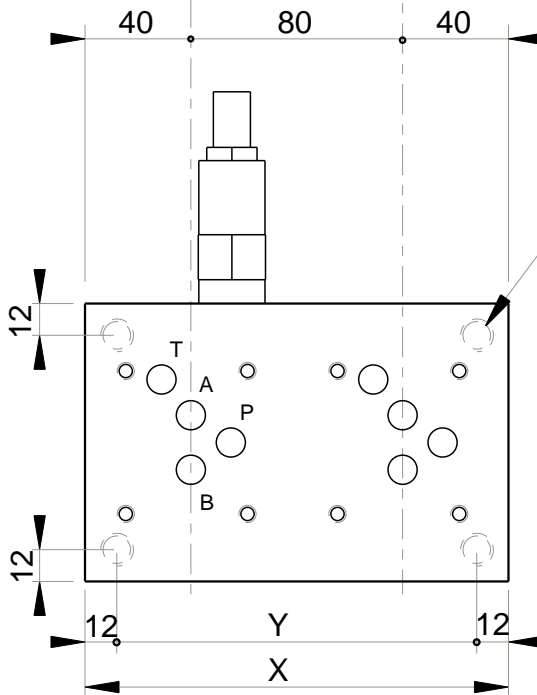
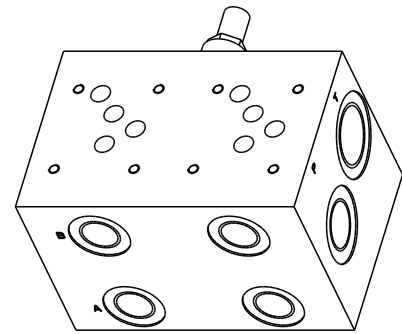
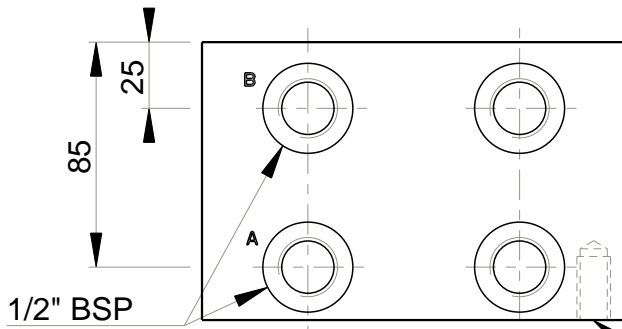
**MR - 5 - \* . G**

MECABOR

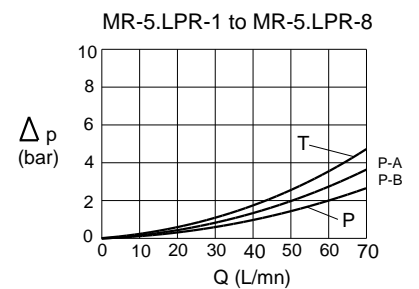
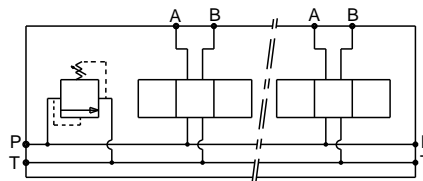
CETOP 5  
Side entry

G : ports BSP

Station number



Stations	X	Y	(kg)
1	80	56	6.00
2	160	136	11.50
3	240	216	17.20
4	320	296	22.90
5	400	376	28.70
6	480	456	34.40
7	560	536	40.10
8	640	616	45.80



Technical specifications	
Material	: Cast iron EN-GJL-250 _ Phosphatation
Pressure	: 300 bar maxi
Flow rate	: 70 L/mn maxi
Relief valve	: Adjustable from 35 to 350 bar (preset at 175 bar)
Options	: P and/or T not drilled zinc plating to 12 stations

Designation code :

**MR - 5 . LP(R) - \* . G**

MECABOR

CETOP 5  
Side entry

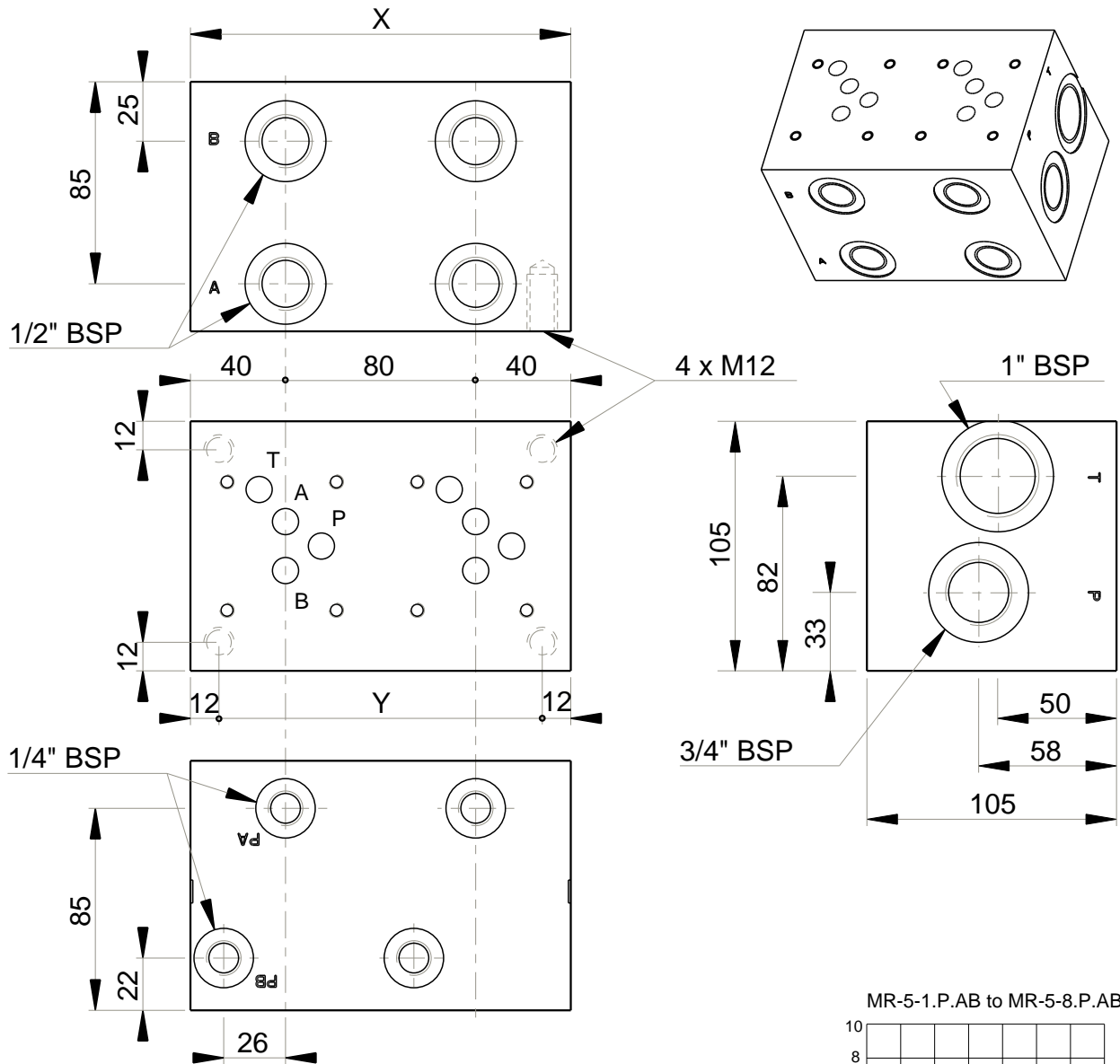
G : ports BSP

Station number

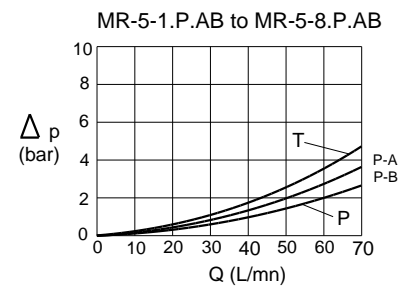
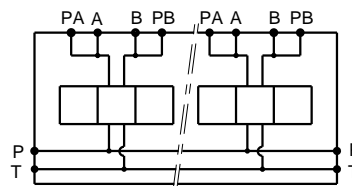
Pressure relief valve

LP = built-in

LPR = adjustable external screw



Stations	X	Y	(kg)
1	80	56	5.80
2	160	136	11.30
3	240	216	17.00
4	320	296	22.70
5	400	376	28.50
6	480	456	34.20
7	560	536	39.90
8	640	616	45.60



### Technical specifications

**Material** : Cast iron EN-GJL-250 \_ Phosphatation  
**Pressure** : 300 bar maxi  
**Flow rate** : 70 L/mn maxi  
**Options** : P and/or T not drilled  
 zinc plating  
 to 12 stations

Designation code :

**MR - 5 - \* . G . P . AB**

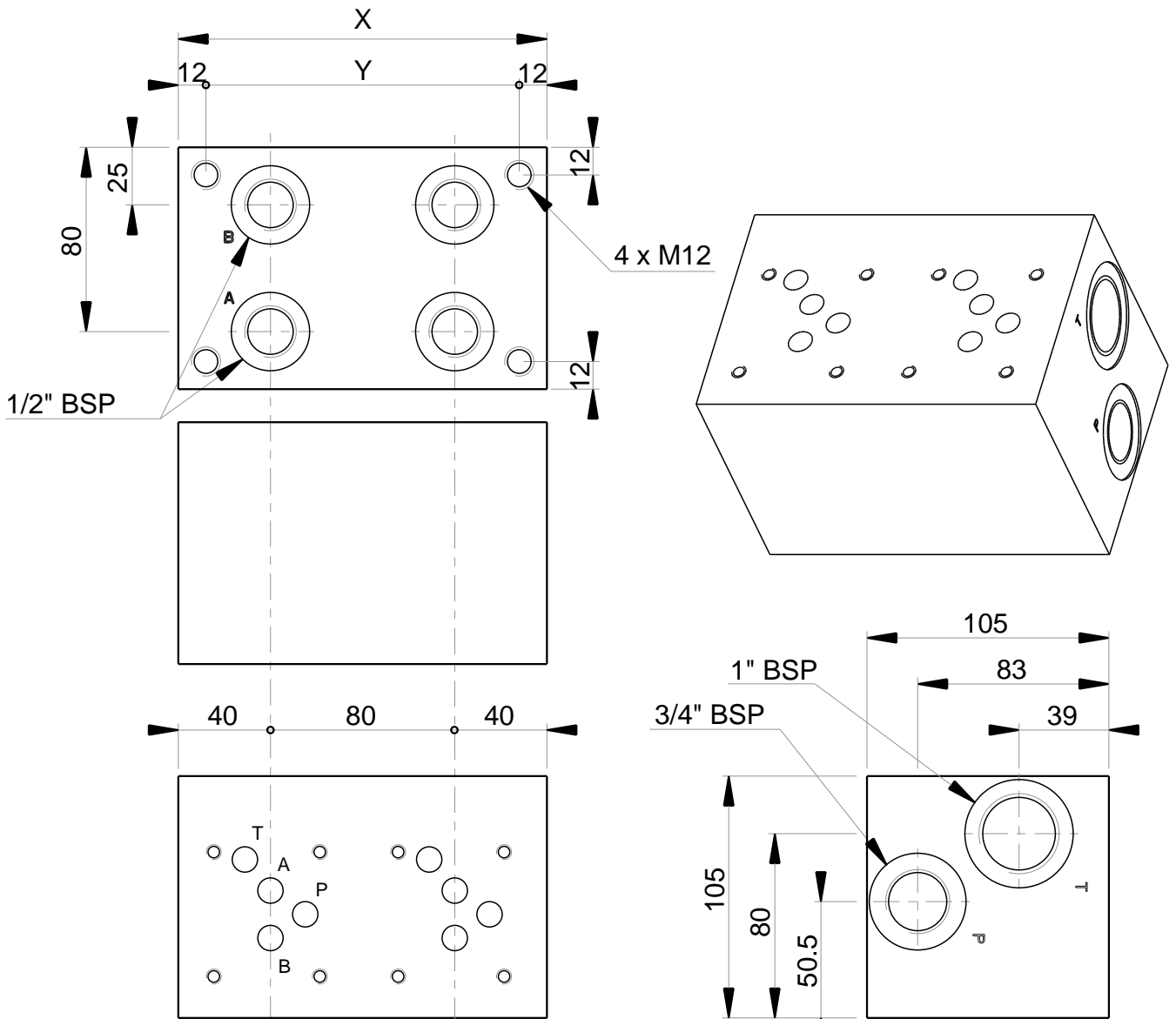
MECABOR

CETOP 3  
Side entry

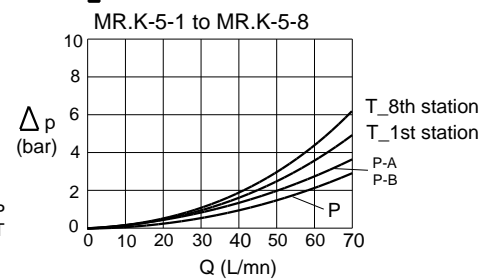
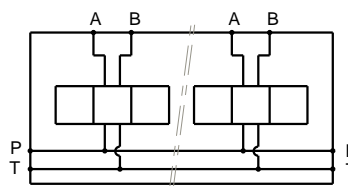
Station number

Pressure test points  
on A and B

G : ports BSP



Stations	X	Y	(kg)
1	80	56	5.80
2	160	136	11.30
3	240	216	17.00
4	320	296	22.70
5	400	376	28.50
6	480	456	34.20
7	560	536	39.90
8	640	616	45.60



### Technical specifications

Material : Cast iron EN-GJL-250 \_ Phosphatation  
 Pressure : 300 bar maxi  
 Flow rate : 70 L/mn maxi  
 Options : P and/or T not drilled through  
 zinc plating  
 to 12 stations

Designation code :

**MR . K - 5 - \* . G**

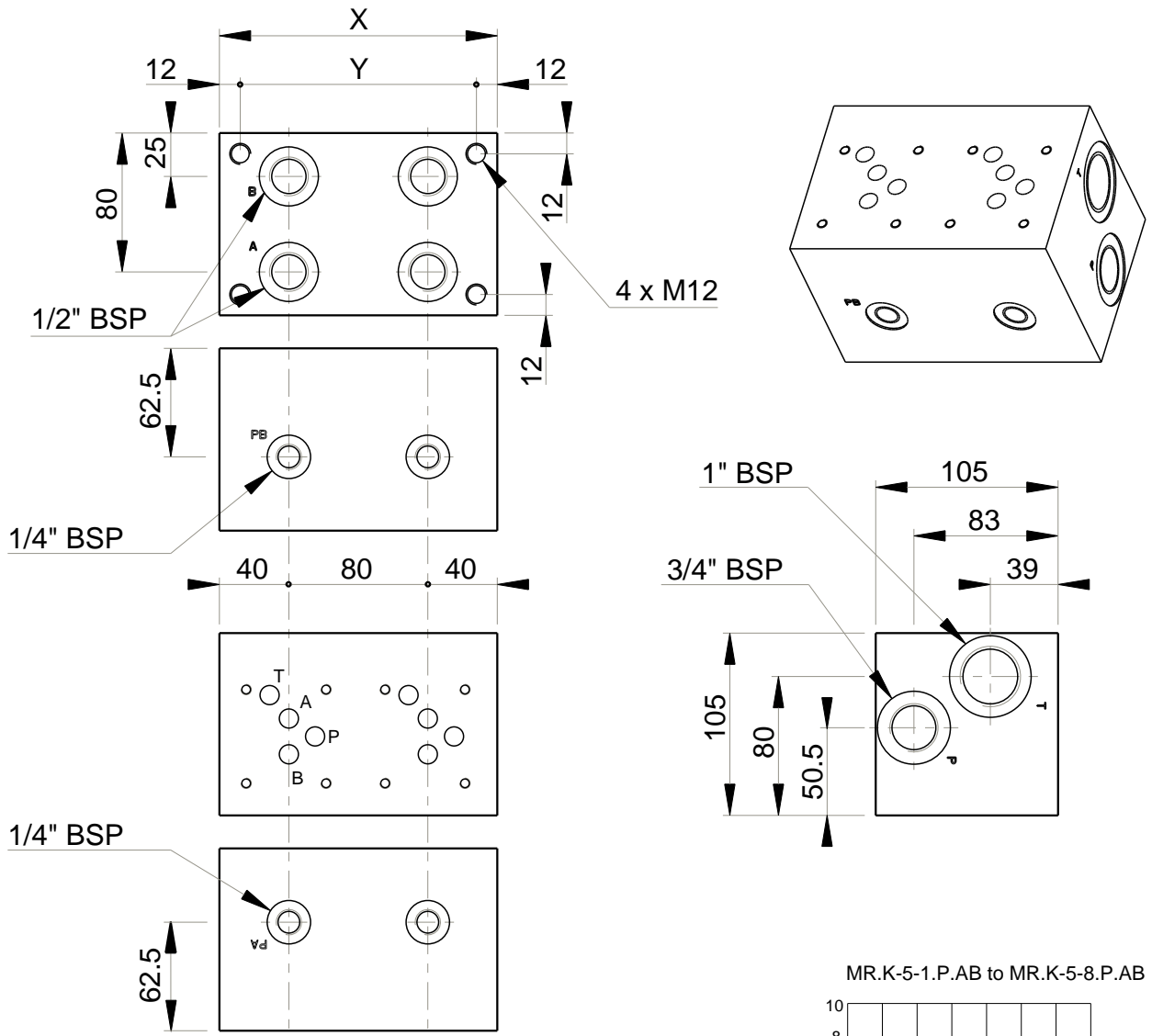
MECABOR

Bottom entry

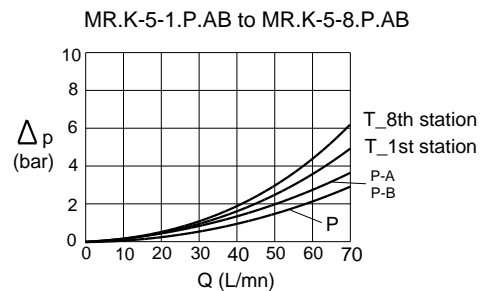
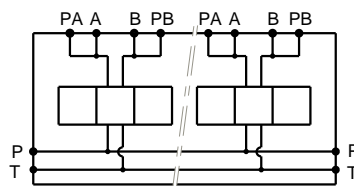
CETOP 5

G : ports BSP

Station number



Stations	X	Y	(kg)
1	80	56	5.80
2	160	136	11.30
3	240	216	17.00
4	320	296	22.70
5	400	376	28.50
6	480	456	34.20
7	560	536	39.90
8	640	616	45.60



### Technical specifications

Material : Cast iron EN-GJL-250 \_ Phosphatation  
 Pressure : 300 bar maxi  
 Flow rate : 70 L/mn maxi  
 Options : P and/or T not drilled through  
 zinc plating  
 to 12 stations

Designation code :

**MR . K - 5 - \* . G . P . AB**

MECABOR

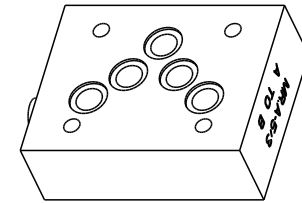
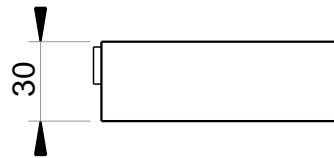
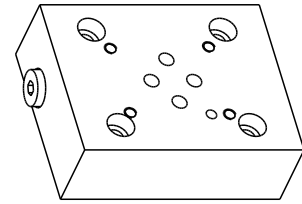
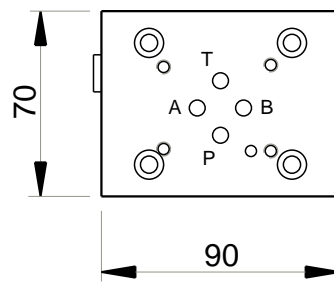
Bottom entry

CETOP 5

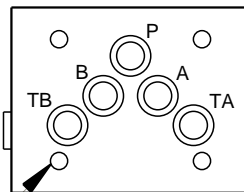
Station number

Pressure test points  
on A and B

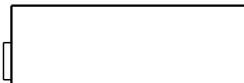
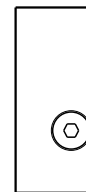
G : ports BSP



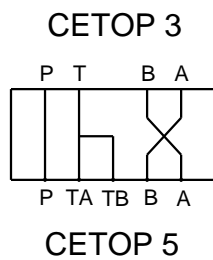
MR.A-5/3  
A TO B



4 x Ø6.5



MR.A-5/3



### Technical specifications

Material	: Steel 1.0736 _ Phosphatation
Pressure	: 300 bar maxi
Weight	: 1.40 kg
Supplied with seals and screws	

Designation code :

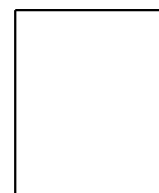
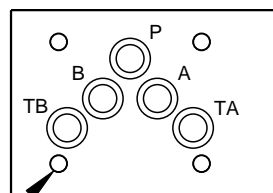
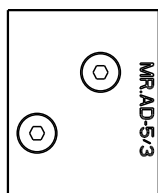
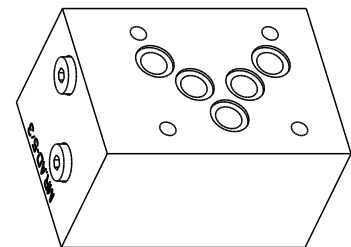
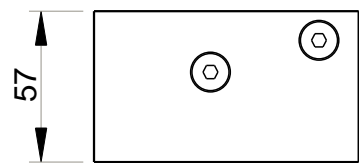
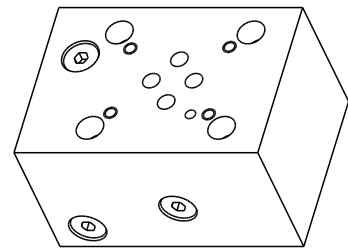
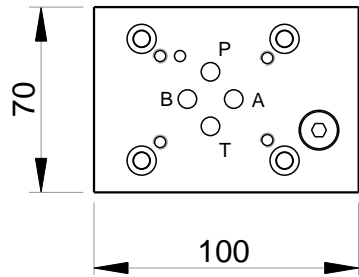
**MR . A - 5 / 3**

MECABOR

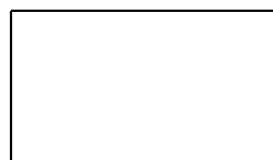
Adaptator plate

CETOP 5

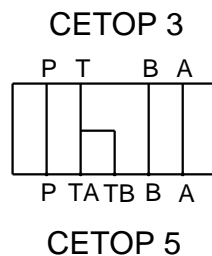
CETOP 3



4 x Ø6.5



MR.AD-5/3



### Technical specifications

Material : Steel 1.0736 \_ Phosphatation  
 Pressure : 300 bar maxi  
 Weight : 2.90 kg  
 Supplied with seals and screws

Designation code :

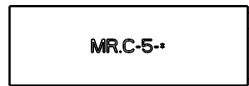
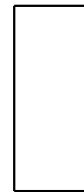
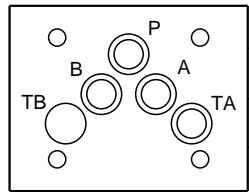
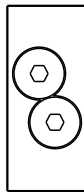
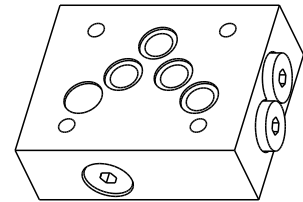
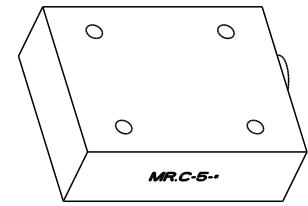
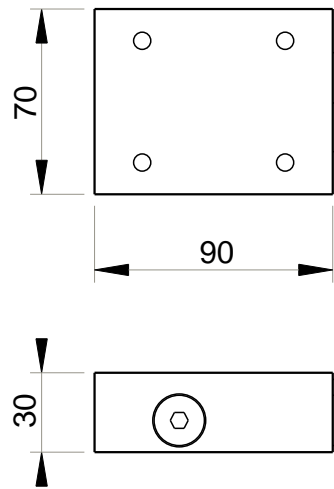
**MR . AD - 5 / 3**

MECABOR

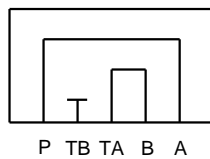
Direct adaptator plate

CETOP 5

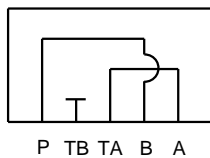
CETOP 3



MR.C-5.PA



MR.C-5.PB



### Technical specifications

Material	: Steel 1.0736 _ Phosphatation
Pressure	: 300 bar maxi
Weight	: 1.35 kg
supplied with seals	

Designation code :

**MR . C - 5 . \***

MECABOR

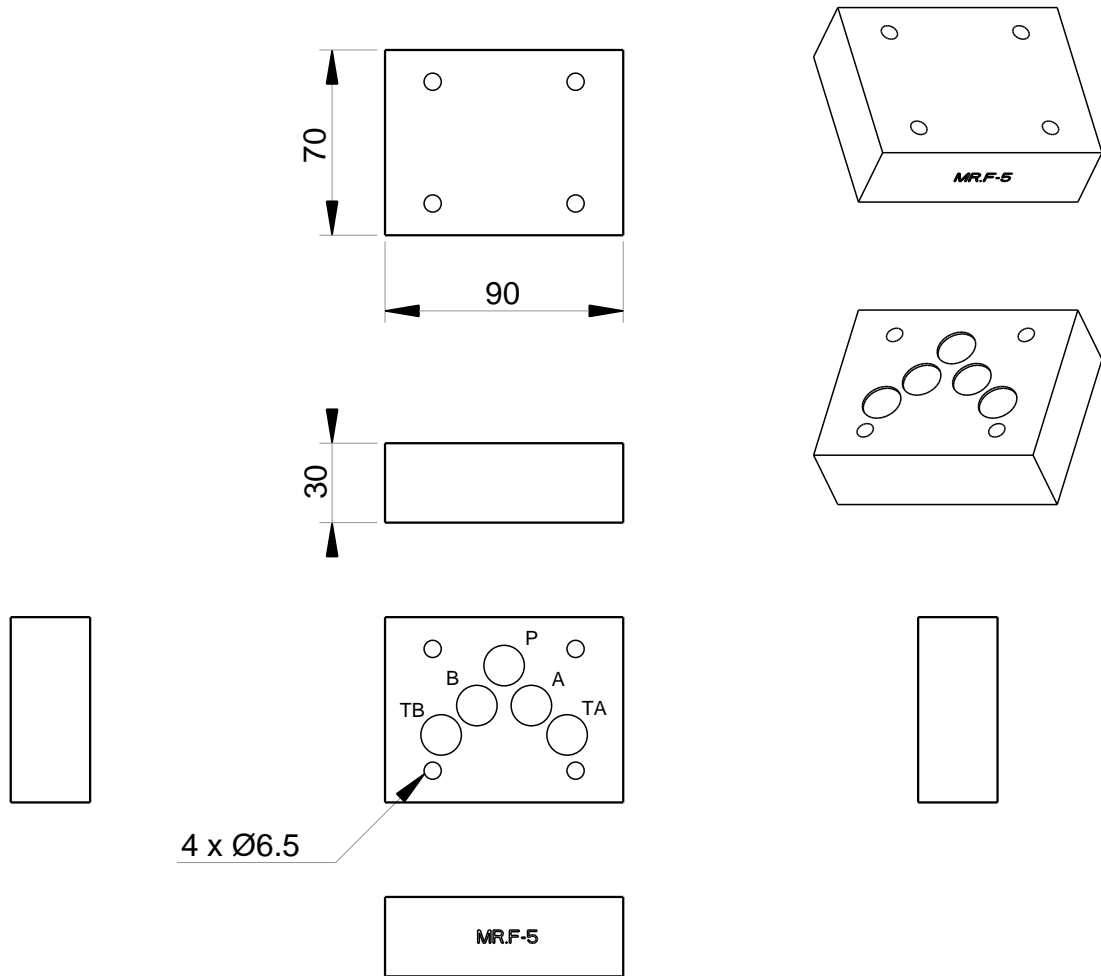
Crossover plate

CETOP 5

PA = P - A  
T - B

PB = P - B  
T - A





MR.F-5



### Technical specifications

Material	: Steel 1.0736 _ Phosphatation
Pressure	: 300 bar maxi
Weight	: 1.50 kg
Supplied with seals and screws	

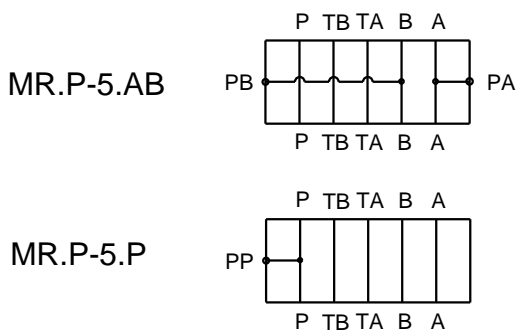
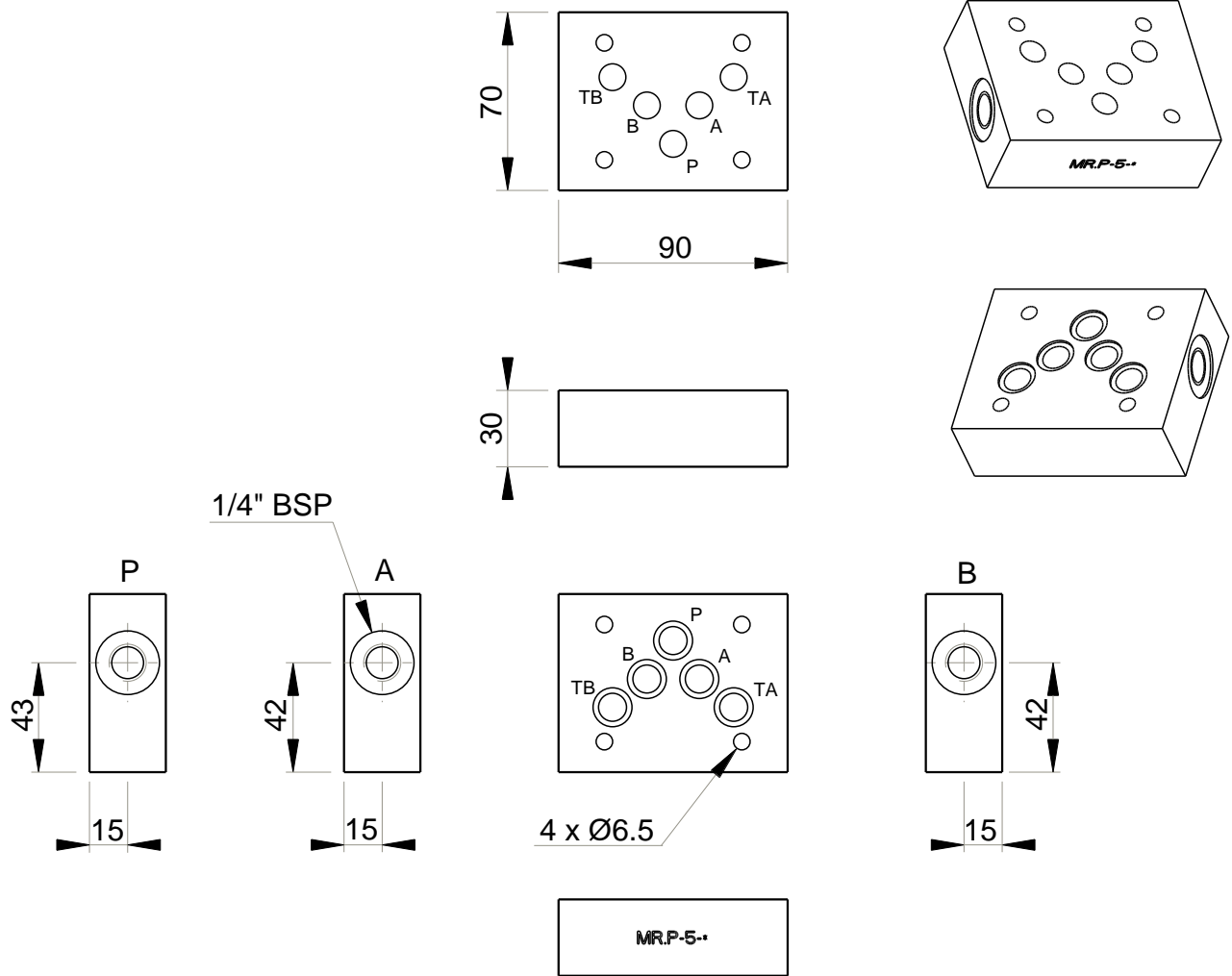
Designation code :

**MR . F - 5**

MECABOR

Blanking plate

CETOP 5



Technical specifications	
Material	: Steel 1.0736 _ Phosphatation
Pressure	: 300 bar maxi
Weight	: 1.30 kg
Supplied with seals	

Designation code : **MR . P - 5 - \* - 1/4" G**

MECABOR

Subplate with  
pressure test points

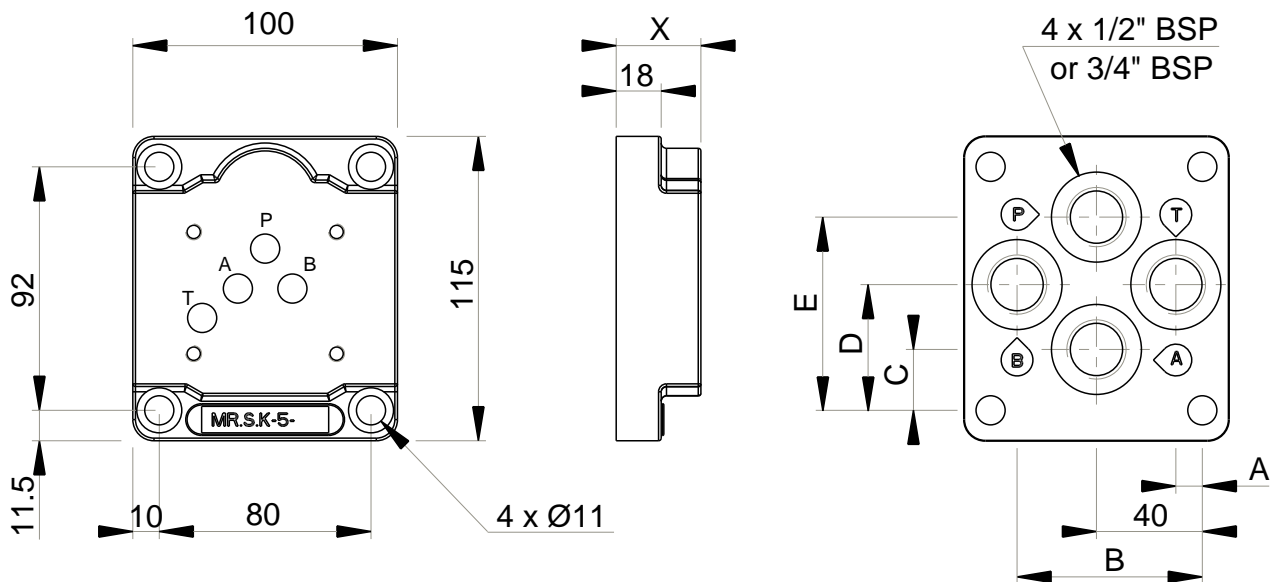
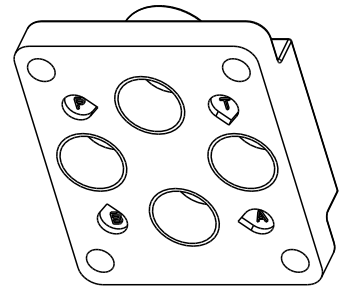
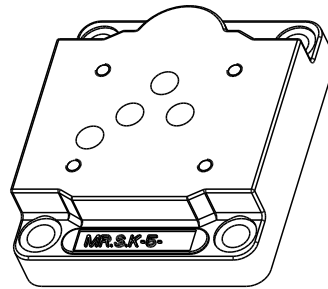
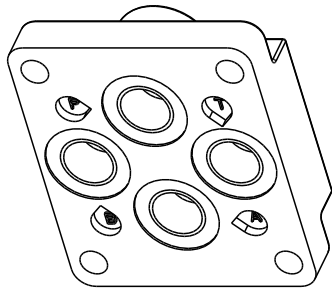
CETOP 5

G : ports BSP

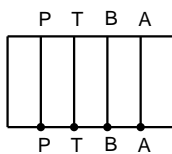
P = pressure test point on P  
AB = pressure test points  
on A and B

MR.S.K-5-1/2"

MR.S.K-5-3/4"



Stations	X	A	B	C	D	E	Flow rate	(Kg)
1/2"	32	10	70	23	47.5	73	100 L/mn	1.90
3/4"	31	9	71	21	48	75	120 L/mn	1.70



### Technical specifications

Material : Cast iron EN-GJS-400-15 \_ Phosphatation  
 Pressure : 300 bar maxi

Designation code :

**MR . S . K - 5 - \* G**

MECABOR  
 Subplate  
 Bottom entry  
 CETOP 5

G : ports BSP  
 1/2"  
 3/4"